



ACMPE Board Certification and Fellowship

April 30, 2015

*Ann Roemen, MBA, CMPE
SDMGMA ACMPE Forum Representative
ACMPE Midwest Section Forum Coordinator*



Advancing Leaders. Advancing Practices.™





What is ACMPE?

- American College of Medical Practice Executives
- Certification and fellowship authority of MGMA



Body of Knowledge

- Six domains
 - Organizational governance
 - Operations Management
 - Risk and Compliance Management
 - Patient Centered Care
 - Financial Management
 - HR Management



Steps to Certification

- Become a nominee
 - At least two years healthcare management experience
 - At least six months in a supervisory role
 - Current MGMA member*
 - One-time \$250 application fee



MGMA Membership

- Apply for certification
 - Get first year of MGMA membership *free* (\$475 value)
- Qualifications
 - Current MGMA State member
 - Not a current national MGMA member
 - Must meet certification application requirements
 - Applications must be accepted

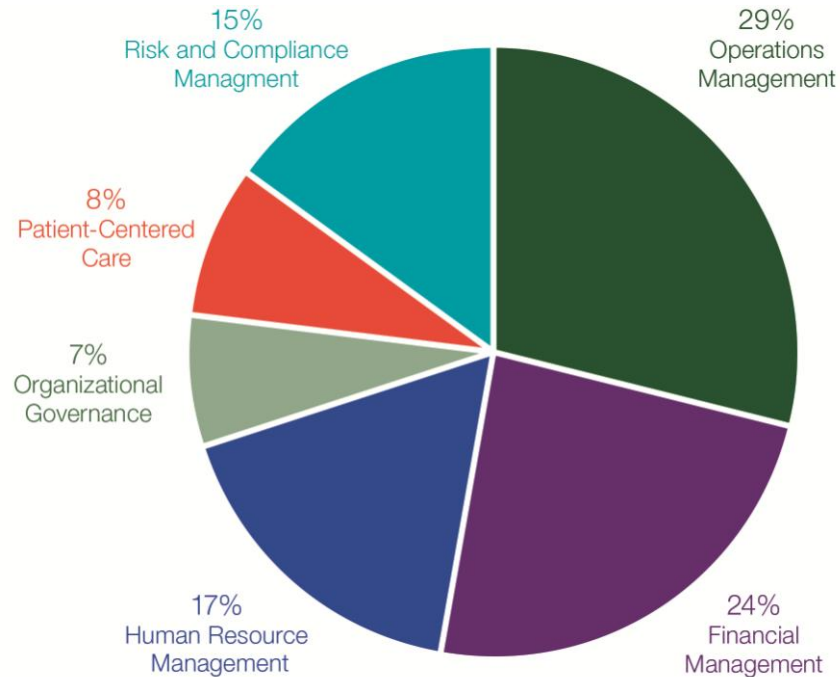


Nominee to Certified

- Multiple choice exam*
 - 175 questions assessing on-the-job knowledge of group practice management principles and practices
- Essay exam*
 - Assesses in-depth knowledge of medical practice management principles and issues, problem-solving and decision-making skills and the ability to communicate in formal writing style
- 50 hours of continuing education (CE)

*Based on Body of Knowledge

Exam Blueprint



Which would have an impact on facility design?

- Fair Labor Standards Act
- Social Security Administration
- Medicare, Part B
- Americans with Disabilities Act

*Operations Management Domain



Americans with Disabilities Act

In planning cash reserves for a annual operating budget.....

- ... which of the following should be done?
- Have providers prepared for a capital call
- Establish a working cash line with a lender
- Avoid shortfalls by closely monitoring cash flow
- Budget at least 30 days' cash on hand

* Financial Management Domain



Budget at least 30 days' cash on hand



According to the Department of Labor

....of what does a work week consist?

- The average number of hours worked during the pay period
- Midnight Sunday to 11:59 pm Saturday
- Seven consecutive 24-hour periods
- Five consecutive days

*HR Management Domain



Seven consecutive 24-hour periods

What must the evidence demonstrate

.....in order to prove medical malpractice?

- Misdiagnosis
- Permanent disability
- Lack of informed consent
- Deviation from the standard of care

* Risk and Compliance Management Domain



Deviation from the standard of care

Which of the following is true of an effective strategic plan

- It focuses on developing long-range strategies to attain identified goals
- It has a useful life of no more than two years
- It provides a step-by-step guide for the future development of an organization
- It outlines the organization's operational objectives

* Organizational Governance Domain



It focuses on developing long-range strategies to attain identified goals

Which of the following is most important

.... when developing a continuous quality improvement program?

- Frequently re-evaluating options
- Turning to outside sources for help
- Involving management
- Developing a strong patient focus

*Patient Centered Care Domain



Developing a strong patient focus

Why Become Certified?

- Elevate your career
- Stand out in your profession
 - only 11 CMPE's in South Dakota
- Gain a competitive advantage
- Improve practice performance



Resources

- ACMPE website
 - Personal Inventory
- MGMA Book Store
- Online study groups



Exam administration

- Computerized exams
 - Offered four times a year
 - 48 test days per year
 - Immediate objective exam results
 - Essay results within eight weeks
- Available in Sioux Falls and Spearfish
- Next exams – August 17 - 29
- Registration – June 29 - July 14



Fellowship

Earn the designation of Fellow in ACMPE (FACMPE) and gain:

- The highest level of distinction in the medical practice management profession
- Greater professional respect and recognition as a proven expert in the profession
- Leadership and mentoring opportunities
- Requests for your unique perspective and opinions
- Five fellows in South Dakota



Attaining Fellowship

- Professional paper documenting the objectives and results of an investigation into a health care management topic
- Three types of professional papers:
 - Exploratory
 - Historical
 - Focus

Resources

- ACMPE area of Web site (www.mgma.com/acmpe)
- The Body of Knowledge for Medical Practice Management (www.mgma.com/bok)
- ACMPE Forum Representative



What are you waiting for?

- South Dakota
 - 11 Nominees
 - 11 CMPE's
 - 4 Fellows
 - 3 Life Fellows



Questions?

ann.roemen@independentcare.org



Advancing Leaders. Advancing Practices.™